

RLDT621 Surface mounted low glare LED adjustable downlight designed with high efficacy COB LED chip, excellent glare control, powder coated aluminium housing and integral LED driver.

- Colour Temperature:** Single colour 1-CCT: 3000K / 4000K  
Switchable 3-CCT: 3000K / 4000K / 5000K
- LEDs Life Time:** 50,000Hrs L70 / B10 at 25C°
- CRI:** CRI90+
- Beam Angle:** 24° up to 60° on selected fixtures
- Driver options:** Non-dimmable, Triac dimmable, DALI dimmable LED driver
- IK Rating:** IK03
- IP Rating:** IP20
- Luminaire's Colour:** White or black finish

**Applications:**

Hotels, Foyers, Retails Shops, Shopping Centres, Aged Care Facilities, Schools, Offices.

Lumen output based on Absolute lumens, 4000K LED chip and manufacturers rated mA drivers.

\*\*\* NOTE: Dimensions and Cut Out sizes may change without notification

# Rytec Lighting Australia Pty Ltd

## 1-CCT Single Colour

Cat	System Watt	Lumen Output at 36°	Colour Temperature	Beam Angle	Dia X Height
RLDT621-10	10W	843 981	3000K 4000K	30° / 36° / 60°	Ø65 X 206
RLDT621-15	15W	1325 1388	3000K 4000K	30° / 36° / 60°	Ø65 X 206
RLDT621-20	20W	1876 2078	3000K 4000K	24° / 36° / 60°	Ø85 X 232
RLDT621-25	25	2302 2667	3000K 4000K	24° / 36° / 60°	Ø85 X 232
RLDT6921-28	28W	2478 2853	3000K 4000K	24° / 36° / 60°	Ø85 X 232
RLDT621-30	30W	2886 2888	3000K 4000K	24° / 36° / 60°	Ø85 X 232

## 3-CCT Switchable Colour Temperature

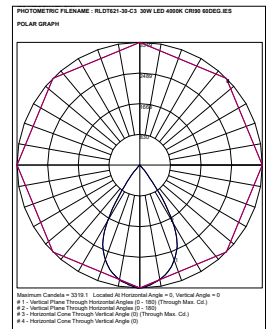
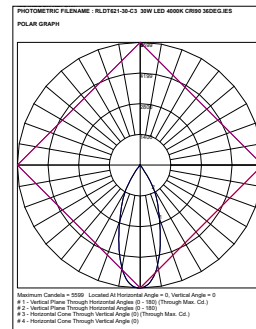
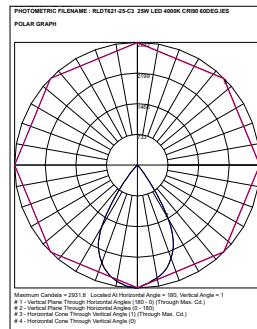
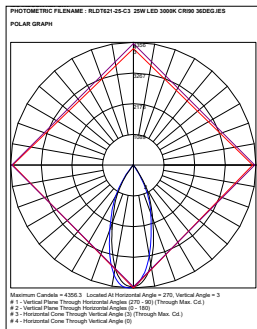
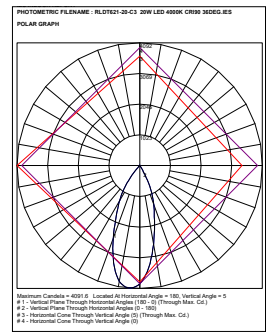
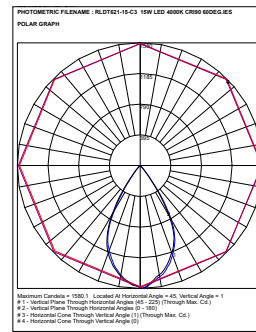
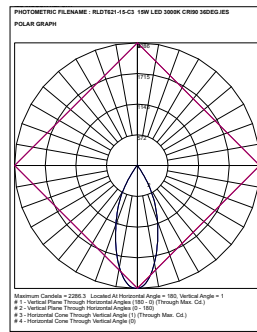
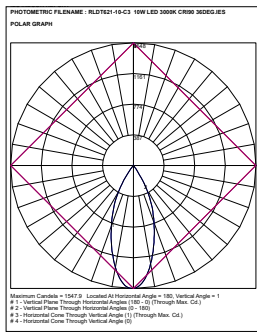
Cat	System Watt	Lumen Output at 36°	Colour Temperature	Beam Angle	Dia X Height
RLDT621/-10-C3	10W	788 821 817	3000K 4000K 5000K	30° / 36° / 60°	Ø65 X 206
RLDT621/-15-C3	15W	1131 1195 1158	3000K 4000K 5000K	30° / 36° / 60°	Ø65 X 206
RLDT621/-20-C3	20W	1834 1978 1935	3000K 4000K 5000K	24° / 36° / 60°	Ø85 X 232
RLDT621/-25-C3	25W	2178 2453 2407	3000K 4000K 5000K	24° / 36° / 60°	Ø85 X 232
RLDT6921-28-C3	28W	2259 2461 2326	3000K 4000K 5000K	24° / 36° / 60°	Ø85 X 232
RLDT621-30-C3	30W	2598 2778 2647	3000K 4000K 5000K	24° / 36° / 60°	Ø85 X 232

Lumen output based on Absolute lumens, 4000K LED chip and manufacturers rated mA drivers.

\*\*\* NOTE: Dimensions and Cut Out sizes may change without notification

## Optional Extras

Options	Suffix	Comments
Colour Temperature	3K	Single colour 1-CCT : 3000K
Colour Temperature	4K	Single colour 1-CCT : 4000K
Colour Temperature	C3	Switchable 3-CCT: 3000K/4000K/5000K
Triac dimmable	DM	Triac dimmable LED driver
DALI dimmable	EBD	DALI dimmable LED driver



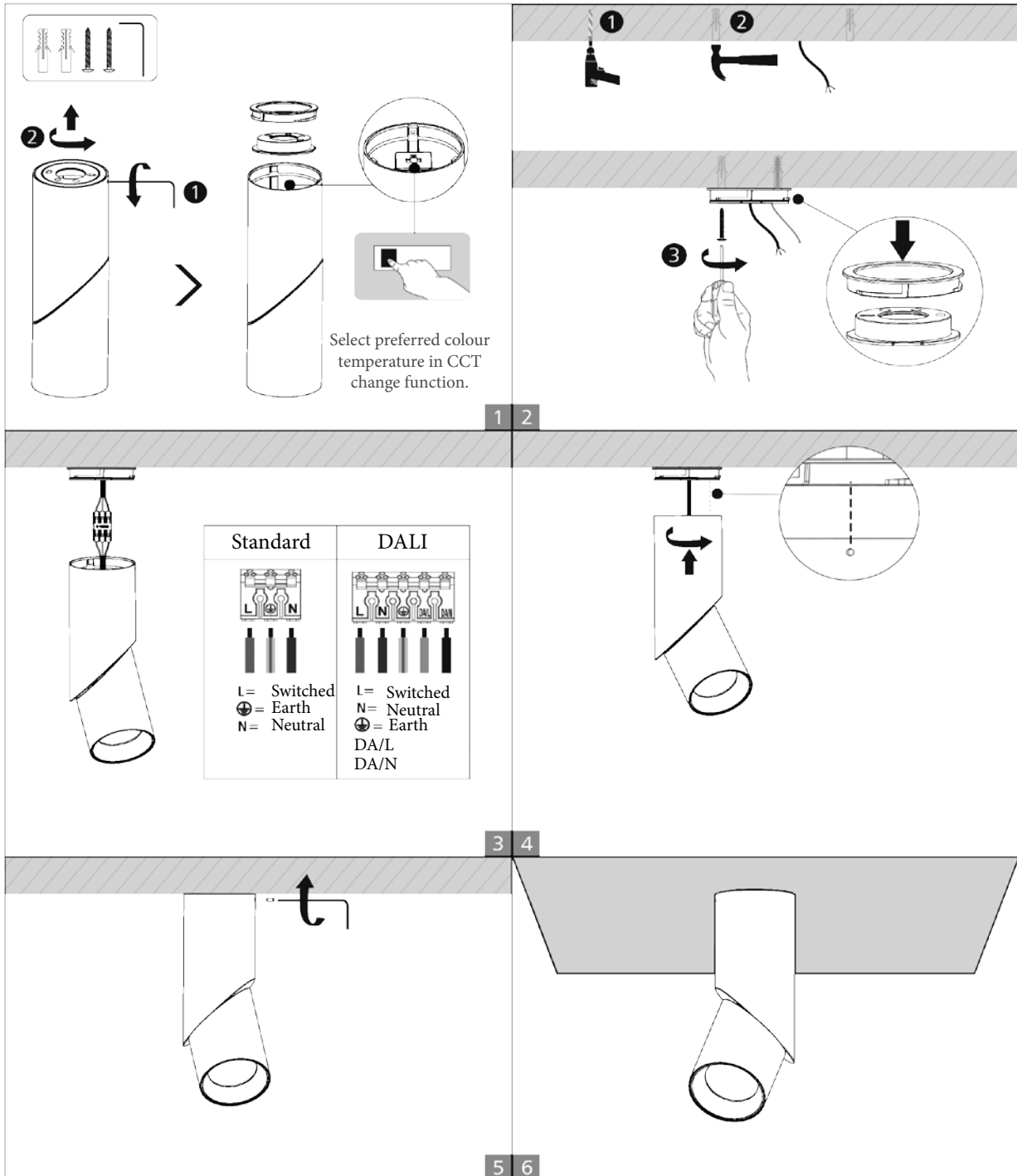
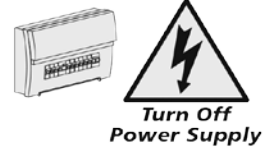
Lumen output based on Absolute lumens, 4000K LED chip and manufacturers rated mA drivers.

\*\*\* NOTE: Dimensions and Cut Out sizes may change without notification

**INSTALLATION**

**WARNING** ⚡

- 1; Switch off power supply before installation and maintenance.
- 2; Switch on power supply only after installation or maintenance is completed.
- 3; Professional electrician to do installation and maintenance.



Lumen output based on Absolute lumens, 4000K LED chip and manufacturers rated mA drivers.

\*\*\* NOTE: Dimensions and Cut Out sizes may change without notification